

Dear Friends and Colleagues,

Welcome to the latest edition of CIH e-bulletin, this month we continue to share highlights of our key activities.

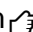
## 1. INNOVATION AT A GLANCE

This month, we would like to feature a local med-tech start-up, **NOUSQ Pte Ltd**.

A novel handheld device named **CLiKX** is the brainchild of Dr Lynne Lim, an ENT surgeon, and her co-researchers from both the engineering and medical faculties of NUS.

CLiKX, is the world's first sensor controlled hand-held automated grommet tube applicator for safe and precise grommet insertion to treat otitis media effusion / "glue ears". Because of its non-invasive application method, it has the potential to save time, money and manpower for hospitals and patients alike. CLiKX is currently planning to do the first-in-man and proof of concept clinical trials.

CLiKX is seeking to raise Pre-seed Funding and looking for potential investors for the company.

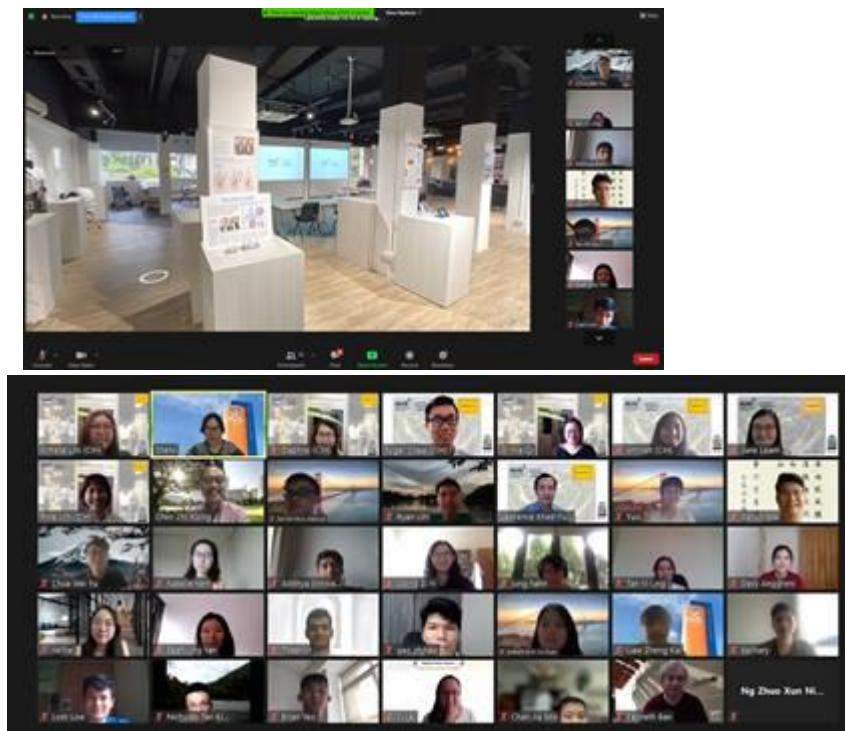
If you are interested to connect with CLiKX, please reach out to my team  [CIH@nuhs.edu.sg](mailto:CIH@nuhs.edu.sg)



## 2. HIGHLIGHT OF THE MONTH

During the 2<sup>nd</sup> week of June, Centre for Innovation in Healthcare (CIH) was happy to have hosted a 2nd round of interactive 360 virtual tour of our innovation showroom for NUS Inquiry & Thinking Summer Programme students from the Schools of Medicine and Engineering.

We hope that with the demonstration of the potential impact of innovations in improving clinical practice, students will be more inquisitive in their studies and future practice.



### 3. **DONOR SPOTLIGHT**

Thank you [Healkee Medical Pte Ltd](#)! Centre for Innovation in Healthcare (CIH) is incredibly grateful to you for your recent donation.

These are uncertain times, and we especially appreciate the kind gesture you've shown to our Alexandra Hospital healthcare care team members, who are working around the clock to deliver care during this unprecedented health crisis.

Thanks again, William and Alan for showing your care and support!

Social media links to the donation posts:

<https://www.facebook.com/221962921699346/posts/944896976072600/?d=n>

[https://www.linkedin.com/posts/alexandra-hospital-singapore\\_healthcare-innovation-covid-activity-6811847167666466816-9Zh](https://www.linkedin.com/posts/alexandra-hospital-singapore_healthcare-innovation-covid-activity-6811847167666466816-9Zh)

[https://www.instagram.com/p/CQSQ1VhHrlz/?utm\\_medium=copy\\_link](https://www.instagram.com/p/CQSQ1VhHrlz/?utm_medium=copy_link)



#### 4. **FEATURED NEWS**

Centre for Innovation in Healthcare (CIH) is truly honoured to be identified as a global exemplar in the field of healthtech incubation and acceleration in a recent research project.

Our Centre was asked to share our success factors with the Guy's & St Thomas' NHS Foundation Trust, which was planning to design a pioneering MedTech Innovation Centre that will reinforce its position as one of the UK leading academic health science centres.

Guy's & St Thomas' NHS Foundation Trust (GSTT) is one of the largest and busiest hospital trusts in the UK, with a global reputation for medical breakthroughs and innovation. A new project is underway to design a pioneering MedTech Innovation Centre that will reinforce its position as one of the UK leading academic health science centres.

Our research into global exemplars in the field of healthtech incubation and acceleration has identified the Centre for Innovation in Healthcare at the National University Health System as being of particular interest. We believe GSTT's plans for the MedTech Innovation Centre would hugely benefit from understanding more about the vision, creation, operations and success factors of your Centre.

--Guy's & St Thomas's NHS Foundation Trust--

## 5. OUR PARTNERSHIP

Centre for Innovation in Healthcare (CIH) was recently featured by our partner-[Innovation Partner for Impact \(IPI Singapore\)](#) in their latest Innovation Insights! Thank you for the recognition and we will continue to strengthen our collaboration and leverage on each other's network to further build the healthcare innovation ecosystem.

You can read the featured article here: <https://www.ipi-singapore.org/innovation-insights/carving-a-niche-an-interview-with-dr-rina-lim-of-the-centre-for-innovation-in-healthcare.html>

## 6. UPCOMING EVENTS

We curated these events for the coming month. Please feel free to share with your network.

**Click on the individual link for more details:**

JUL	<b>6 Jul:</b> [HealthTEC] "Wearable Technology" Workshop
	<b>7 Jul:</b> [SB Open Access Lecture] - The Evolution of the Use of Data in Healthcare
	<b>9 Jul:</b> [APACMED] Getting Closer to Patients; Patient Engagement and Activation for Medtech
	<b>13 Jul:</b> [SG Innovate] Bioprinting: An Organic Solution
	<b>14 - 16 Jul:</b> [NUS Enterprise] InnovFest x Elevating Founders
	<b>30 Jul:</b> [SG Innovate] The State of Mental Health in Singapore

Calendars are collated to be best of our knowledge. Events and dates may be subject to changes by the event organizers.

We hope to be meeting "face-to-face" again soon but, until then, stay safe and keep in touch.

### **Professor Khek-Yu HO**

**Centre for Innovation in Healthcare (CIH)**  
**NATIONAL UNIVERSITY HEALTH SYSTEM**  
**Senior Consultant, Department of Medicine**  
**NATIONAL UNIVERSITY HOSPITAL**  
<https://www.cih.sg> | [www.nuhs.edu.sg](http://www.nuhs.edu.sg)  
[CIH Facebook](#) | [LinkedIn](#) | [Instagram](#)

Important: This email and its attachments are confidential and may be privileged. If you are not the intended recipient, please notify the sender and delete it immediately; you should not copy or use it for any purpose, nor disclose its contents to any other person without prior written permission. Thank you.